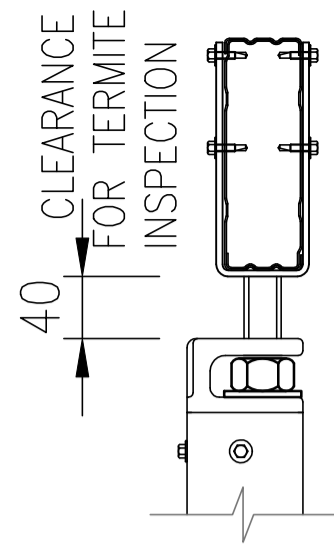


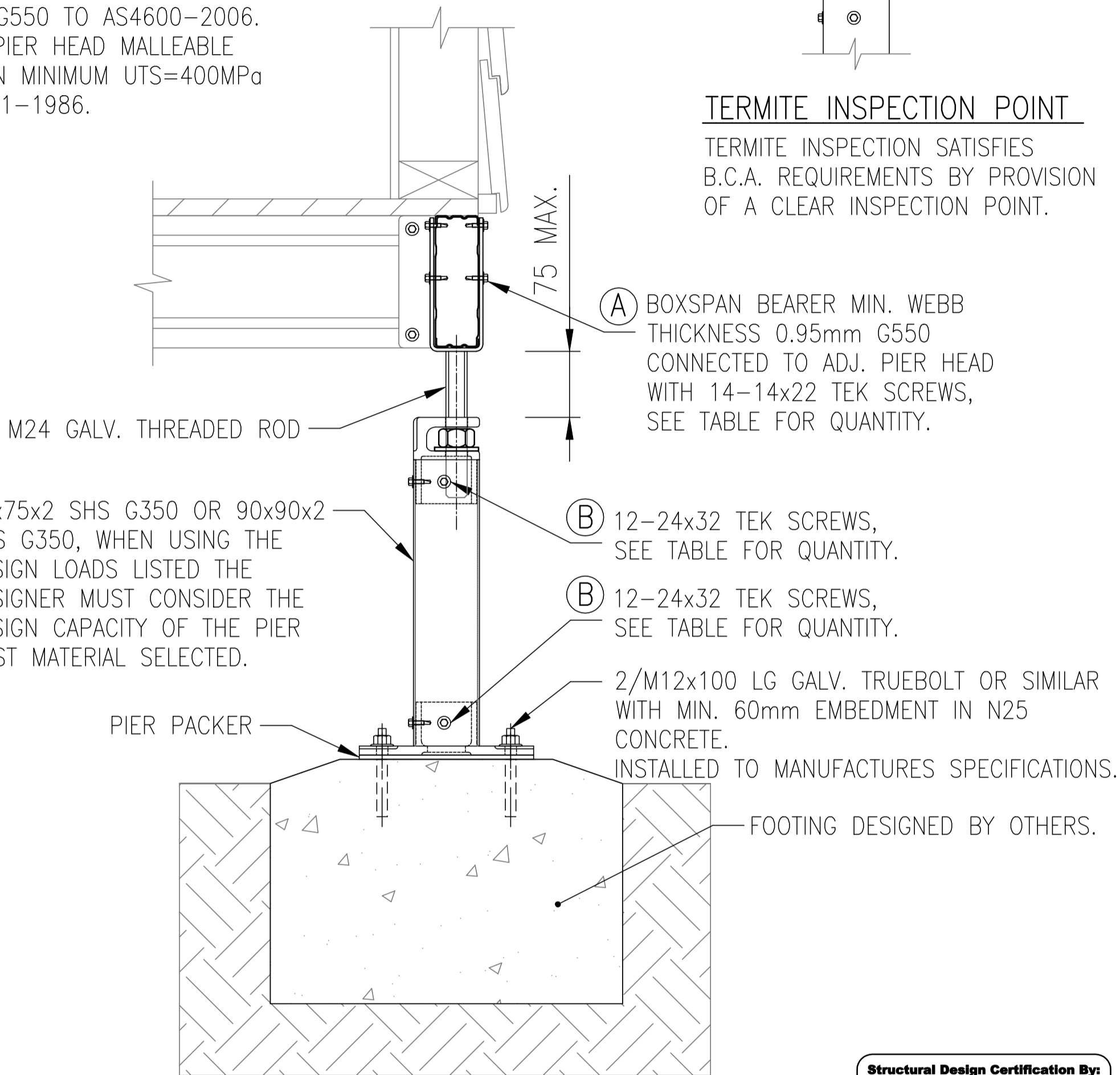
DESIGN NOTES

1. LOADING—LIMIT STATE LOAD CAPACITY AS INDICATED. LOADS TO BE ASSESSED BY OTHERS TO AS1170.1-2002 & AS4055-2012.
2. ALL HOLLOW SECTIONS MINIMUM G350 TO AS 4100-1998.
3. ALL COLD FORMED SECTIONS MINIMUM G550 TO AS4600-2006.
4. CAST PIER HEAD MALLEABLE CAST IRON MINIMUM UTS=400MP_a TO AS1881-1986.



TERMITE INSPECTION POINT

TERMITE INSPECTION SATISFIES B.C.A. REQUIREMENTS BY PROVISION OF A CLEAR INSPECTION POINT.



N3 WIND CONDITIONS

DESIGN LOAD CAPACITIES

LIMIT STATE VERTICAL DOWNWARD LOAD CAPACITY 54kN.
 LIMIT STATE MAXIMUM UPLIFT LOAD CAPACITY 27kN.

LOCATION "A" QTY	LOCATION "B" QTY	MAX. UPLIFT CAPACITY kN
10	6	27.0
8	4	19.2
6	4	16.2
4	3	10.8
4	2	9.6

Structural Design Certification By:

barnson
 DESIGN.PLAN.MANAGE
 ACN 088 342 645
 1/36 Darling Street, Dubbo NSW 2830

Richard J. Noonan
 BE(Hons)ME MIEAust CPEng
 NPER 472690, RPEQ 5264,
 VIC EC2249, NT 11585ES,

Date: 18-09-2014
 Reference No: 20727

SPANTEC

SPANTEC SYSTEMS PTY LTD.
 ABN 56 053 584 384

17 DRAPERS ROAD BRAEMAR, NSW, 2575
 P.O. BOX 81 MITTAGONG, NSW, 2575, AUSTRALIA
 PHONE: 02 4860 1000 FACSIMILE: 02 4872 1616
 sales@spantec.com.au

DATE DRAWN
 21-11-13

DWG FILE
 PIERS

REFERENCE
 P04-01

SCALE
 NTS

VIEW NAME

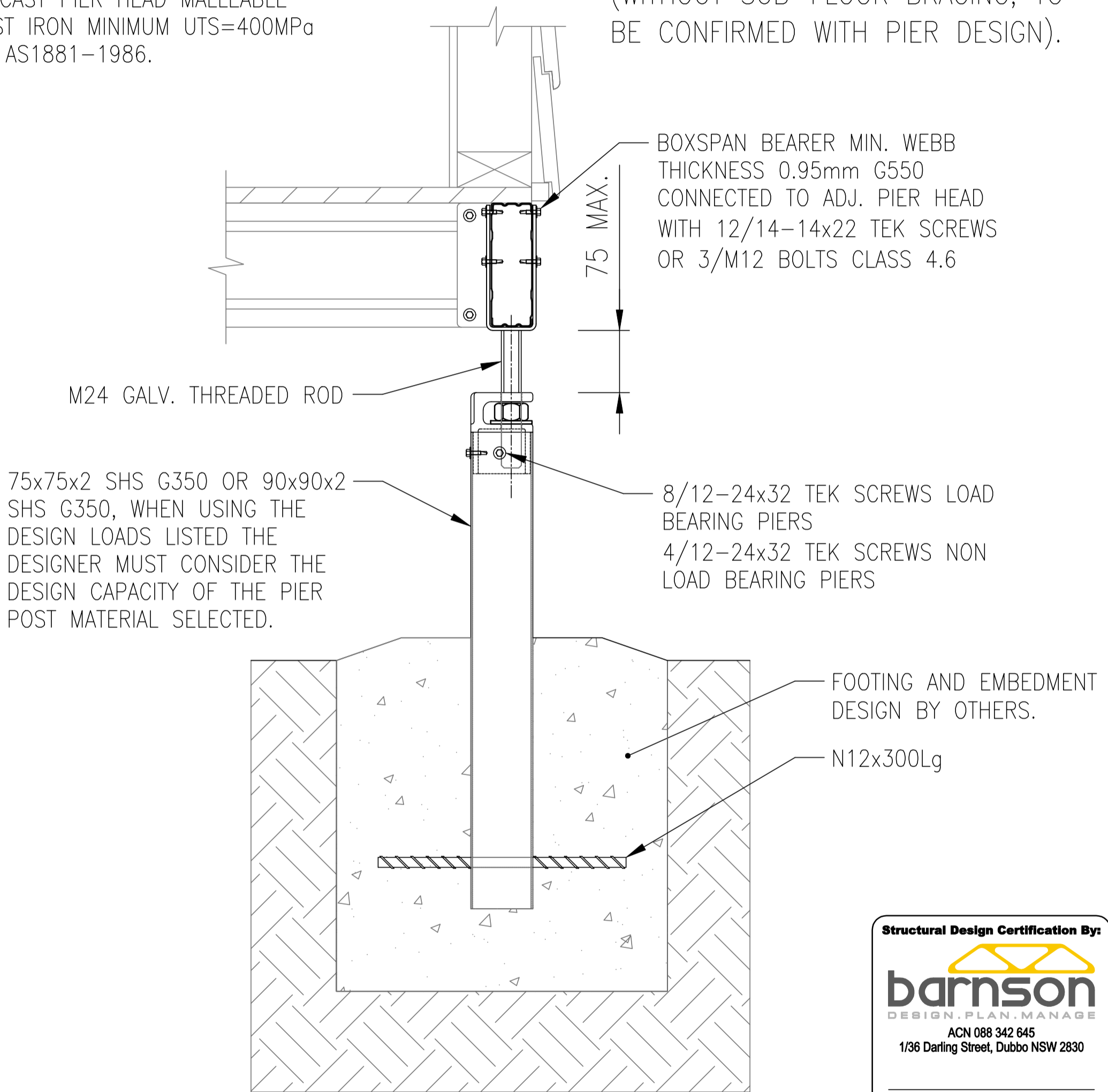
REVISION
 E

DESIGN NOTES

1. LOADING—LIMIT STATE LOAD CAPACITY AS INDICATED. LOADS TO BE ASSESSED BY OTHERS TO AS1170.1-2002 & AS4055-2012.
2. ALL HOLLOW SECTIONS MINIMUM G350 TO AS 4100-1998.
3. ALL COLD FORMED SECTIONS MINIMUM G550 TO AS4600-2006.
4. CAST PIER HEAD MALLEABLE CAST IRON MINIMUM UTS=400MPa TO AS1881-1986.

DESIGN LOAD CAPACITIES

- LIMIT STATE VERTICAL DOWNWARD LOAD CAPACITY 54kN.
 LIMIT STATE UPLIFT LOAD CAPACITY 30kN.
 MAXIMUM LATERAL LOAD CAPACITY AT 800mm FFL IS 5kN PER PIER (WITHOUT SUB-FLOOR BRACING, TO BE CONFIRMED WITH PIER DESIGN).



CYCLONIC WIND CONDITIONS

Structural Design Certification By:

barnson
 DESIGN.PLAN.MANAGE
 ACN 088 342 645
 1/36 Darling Street, Dubbo NSW 2830

Richard J. Noonan
 BE(Hons)ME MIEAust CPEng
 NPER 472690, RPEQ 5264,
 VIC EC2249, NT 11585ES,

Date: 03-12-2013
 Reference No: 20727

SPANTEC

SPANTEC SYSTEMS PTY LTD.
 ABN 56 053 584 384

17 DRAPERS ROAD BRAEMAR, NSW, 2575
 P.O. BOX 81 MITTAGONG, NSW, 2575, AUSTRALIA
 PHONE: 02 4860 1000 FACSIMILE: 02 4872 1616
 sales@spantec.com.au

DATE DRAWN
 21-11-13

SCALE
 NTS

DWG FILE
 PIERS

VIEW NAME

REFERENCE
 P04-02

REVISION
 C